

Oceanside Conservation Trust of Casco Bay

Volume 7 Edition 2, November 2010

*Sail away with Oceanside
for our first winter event*

WINTER BIRDING ON CASCO BAY

Join Bob Bittenbender,
OCT director, and his
wife Margi Huber for
the "Mail Boat Cruise"
on the Casco Bay
Lines.



Bald Eagle*

- See the birds that winter in Casco Bay
- Learn bird identification
- See the Islands of Casco Bay
- Learn about the preserved land of the islands
- Learn the history of the bay and its inhabitants

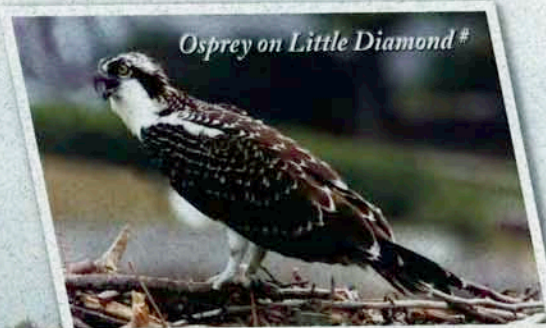
MARCH 5, 2011 (RAIN/SNOW DATE MARCH 6)

*Leaves Casco Bay Lines
promptly at 10:00 a.m.
and returns, non-stop, at 1:30 p.m.*

*\$15 for members, \$20 for guests
Hot soup and snacks will be served.
Bring binoculars, drinks, and warm clothing.*

RSVP to portlandnorth@gmail.com or 207-699-2989

Bob Bittenbender and Margi Huber are a husband and wife team who have led birding and nature trips to such diverse places as Kenya; Tanzania; Mexico to see the wintering monarch butterflies; Italy to learn about culture, food and natural places; Newfoundland to see colonies of Atlantic puffins; and Churchill, Manitoba, Canada, to watch polar bears. Bob and Margi are both graduates of The National Outdoor Leadership School (NOLS). For many years Margi planned trips for Maine Audubon. Bob is the Assistant Property Manager for Maine Audubon, based in Falmouth at the Gililand Farm Sanctuary where he is involved in a major invasive plant removal program. Bob and Margi live in Windham with their dog "Gulliver" (as in Travels).



Osprey on Little Diamond #



Surf Scoter*



American Black Ducks*



Eider Duck*



Bufflehead*



Ben Ferguson -
Eagle Scout Candidate



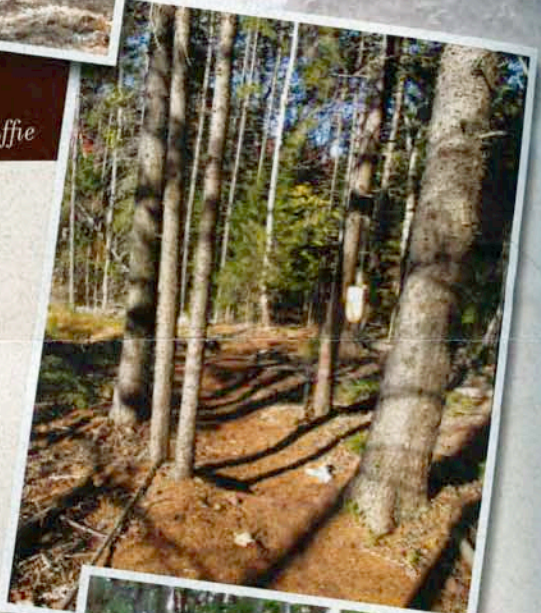
On the Right Path By Christine McDuffie

Ben Ferguson is a 16 year old who doesn't waste any time. He is a Boy Scout working to become an Eagle, the highest rank in scouting. Ben says, "One of the requirements for Eagle is that the candidate must complete a project benefiting the community and demonstrating leadership." In July of this year he proposed to Oceanside a project to build trails in the Wreck Cove property on Long Island. Oceanside holds a conservation easement on this town-owned land.

The old trail from a road to the wild and beautiful Wreck Cove was overgrown and always so wet and mucky after a rain storm that it was nearly impassible. No trail existed into the interior of the parcel. Ben met with the Town Selectmen to get their support; walked the property with one of our OCT board members, Michael Johnson, to plot the path of the trails; and involved an island arborist who agreed to take down large trees which lay in the path of the proposed trails.

With those preparations in place, Ben planned a work party to clear and cut brush; advertised it in the community with posters and an article in the island newsletter; and got the support of island stores to donate refreshments. Ben reports that, "On August 8, 28 people spent a total of 77 hours hacking at weeds, lifting logs, and clearing a trail through the woods," creating a new, dry route to Wreck Cove with a loop spur circling through the interior woodland. Since then Ben organized a group of friends from his high school to make modest hand lettered signs and hang lobster buoys as trail markers. On October 2 he brought some fellow Boy Scouts to the island to spread woodchips on the wetter areas of the trail, and the project was complete.

The new trail system has attracted many islanders who have come for the first time to enjoy this special place thoughtfully set aside by the Town of Long Island and protected with a conservation easement. Future generations will always have this place for quiet recreation.





Ben Ferguson -
Eagle Scout Candidate



WRECK
COVE

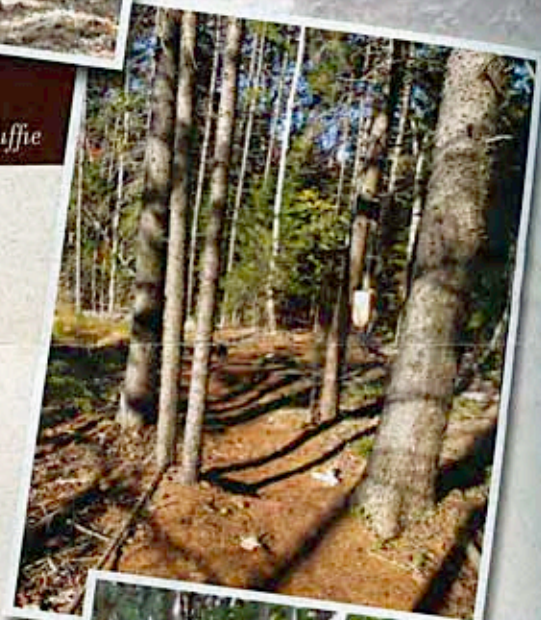
On the Right Path By Christine McDuffie

Ben Ferguson is a 16 year old who doesn't waste any time. He is a Boy Scout working to become an Eagle, the highest rank in scouting. Ben says, "One of the requirements for Eagle is that the candidate must complete a project benefiting the community and demonstrating leadership." In July of this year he proposed to Oceanside a project to build trails in the Wreck Cove property on Long Island. Oceanside holds a conservation easement on this town-owned land.

The old trail from a road to the wild and beautiful Wreck Cove was overgrown and always so wet and mucky after a rain storm that it was nearly impassible. No trail existed into the interior of the parcel. Ben met with the Town Selectmen to get their support; walked the property with one of our OCT board members, Michael Johnson, to plot the path of the trails; and involved an island arborist who agreed to take down large trees which lay in the path of the proposed trails.

With those preparations in place, Ben planned a work party to clear and cut brush; advertised it in the community with posters and an article in the island newsletter; and got the support of island stores to donate refreshments. Ben reports that, "On August 8, 28 people spent a total of 77 hours hacking at weeds, lifting logs, and clearing a trail through the woods," creating a new, dry route to Wreck Cove with a loop spur circling through the interior woodland. Since then Ben organized a group of friends from his high school to make modest hand lettered signs and hang lobster buoys as trail markers. On October 2 he brought some fellow Boy Scouts to the island to spread woodchips on the wetter areas of the trail, and the project was complete.

The new trail system has attracted many islanders who have come for the first time to enjoy this special place thoughtfully set aside by the Town of Long Island and protected with a conservation easement. Future generations will always have this place for quiet recreation.



28th Annual MEETING

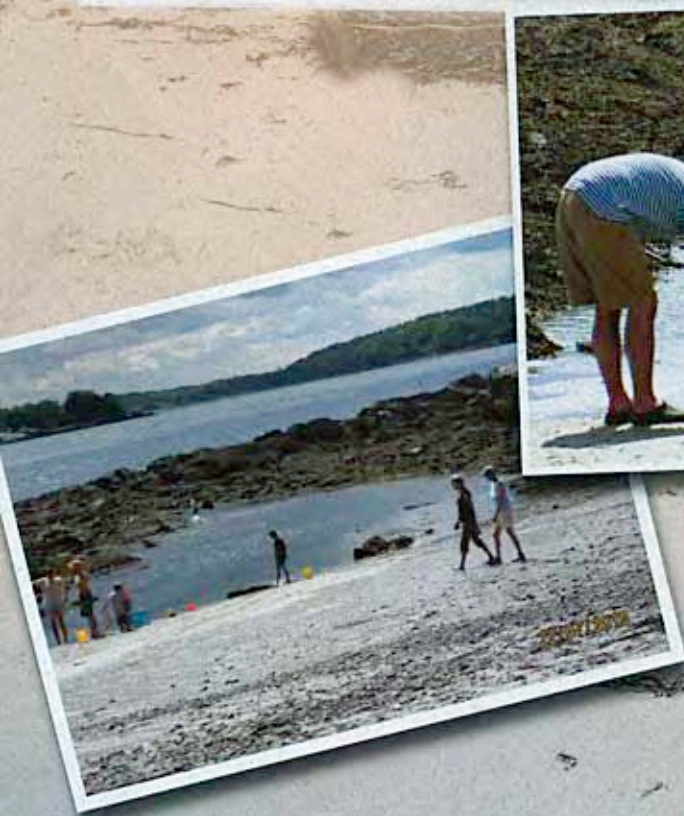
The 28th annual meeting of Oceanside Conservation Trust of Casco Bay was held on July 22 at Fowler's Beach on Long Island. The warm weather and the clear sky made the boat trip to the event a refreshing start to a perfect day at the beach. Thanks to Chris McDuffie and hard working volunteers from Long Island, refreshments were served and an awning provided shade for over 40 attending members. Children played in the water and on the white sands. Even some of the adults went for a swim.

OCT President Roger Berle opened the meeting with the introduction of board members and officers. He described conservation easements as powerful tools and explained how diligent OCT is in monitoring all our properties. In addition to Fowler's Beach, the site of the meeting, College Island, the Daves Sanctuary, and Skillings Woods were all within sight of the gathering. Roger explained that these beautiful pieces of the Maine coast will forever remain unchanged

except by nature because of the hard work of the volunteers of OCT.

Don Perkins, President of the Gulf of Maine Research Institute, spoke to members about the value of sustainable fishing. Maine coastal communities such as the town of Long Island depend on revenues from fishing. We all need to support their efforts by purchasing Maine fish and supporting new ideas about fishing methods. Mr. Perkins described the need for a balance between stewardship and the economy.

Ted Handel from the Community Television Network filmed Oceanside's annual meeting. This broadcast can still be seen by going to www.ctn5 and viewing the 8 - 2 - 10 Community Update program. This excellent report lets us relive a perfect summer day and appreciate OCT's accomplishments.





MEET OCT'S DIRECTOR *Roger Berle*



Oceanside's current president, Roger Berle, is also our longest-serving director, having represented Cliff Island since 1982. In addition, as OCT is a member land trust of Portland North Land Trust Collaborative, Roger has chaired the PNLTC Steering Committee since its 2006 inception. Generously in his role as OCT Skipper, he ferries OCT members from island to island as needed for meetings and monitoring.

Concisely summarizing twenty-eight years of service is a daunting task, but Christine McDuffie, a former president of OCT, is capable of the challenge. She describes Roger's extensive contributions to Oceanside in this way:

"Roger is a 'git ér done' kind of guy. He has held every office in this organization several times over as secretary, treasurer, vice-president, and president. His is a lifelong passion to protect as much of these Casco Bay Islands as we can for future generations to enjoy. He does whatever it takes: slogging and scrambling to monitor properties on the ground, visiting with donors, partnering with other organizations, writing, talking, using his considerable negotiating skills to secure the details of protective easements, nudging and nurturing this organization to stretch our capacity, and (thankfully) taking on fundraising tasks which the rest of us shy away from. He has the long term vision, but he also is willing to do the dirty work that will get us there."

For thirty-four years Roger owned and operated a construction business, Finestkind Builders EPD on Cliff Island, but he also used the island as a base for his long-standing commitment to the permanent preservation of significant open space.

"From my sixty-seven years as a Cliff Islander," Roger notes, "I have developed an increasing awareness of how much anything and everything that happens on my finite island affects my community's quality of life. Some change is inevitable. Securing in perpetuity the conservation of the most special pieces of land that we and our ancestors have long treasured ensures that our present and future enjoyment of those island treasures is guaranteed."

Roger is active in other organizations as well. A former member of the Land for Maine's Future Board (LMF), he is a past president of Portland Trails and past chair of the Portland Land Bank Commission. He currently serves as chair of the Maine Islands Coalition, which comprises the elected representatives from the surviving fourteen year-round Maine coastal islands and which meets to address issues affecting the sustainability of these unique communities.

Since closing his business, Roger does fundraising consulting for smaller nonprofit organizations, and he is writing a novel. He and Lesley MacVane are "touring" with gallery showings of their photo-essay documentary "Off-Season, Off-Shore." A graduate of Bowdoin College (BA) and Boston University (MBA), Roger resides in Falmouth and on Cliff Island. His daughter Liz lives in San Francisco, and his son Christian lives in Washington, DC.

STEWARDSHIP OF COLLEGE ISLAND by Eric Handley

My wife Betsy and I walked around the rocky shore line of College Island this July courtesy of Erno Bonebakker's boat "Pea Soup". The one-acre island is accessible by boat or at low tide from Fowler's Beach on Long Island. On July 22, we were doing an onshore monitoring visit for Oceanside Conservation Trust. Previous monitoring activity by OCT in 2008 and 2009 and an observation from aboard "Christian Alf" in 2010 had stimulated much board discussion about whether to remove invasive species and, if so, what methods to use.

College Island is totally overgrown with an impenetrable thicket of undesirable vegetation such as oriental bittersweet, rugosa rose and poison ivy. A steep ledge shoreline rises to a relatively flat top covered with a layer of soil and a dense growth of rose bushes and bayberry. Some patches of open ground are largely covered with goldenrod. Extensive evidence of mice and vole activity is apparent on the island soil, but no evidence of deer. An old fox burrow is on the SW side of the soil-covered area.

The island is an illustration of what unchecked invasive species can do to a small piece of land. If islands like College are not managed, they become poor habitats for wildlife because invasive plants strangle out native plants.

Oceanside Conservation Trust and residents of Long Island plan to join forces for a work day on College Island. In the spring volunteers will do a selective cutting of the oriental bittersweet and rugosa rose to make room for nature to fill in with the existing native bayberry and other desirable plants and grasses.

This project will be a delicate task, as stewards will have to be very careful not to disturb the thin soil layers and cause erosion, but the rewards of allowing the bayberry bushes to thrive for warbler food and to fix nitrogen in the soil will be great.

PORTLAND NORTH STEWARDSHIP TRAINING



Sophie DeMaio and volunteers check survey maps



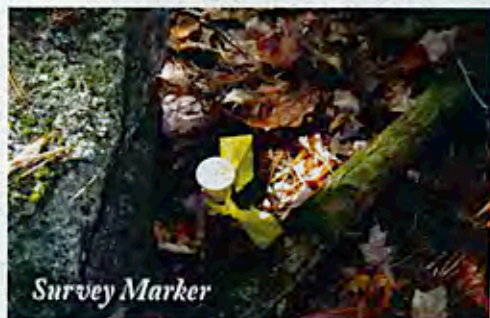
Tricia Rouleau demonstrates compass use

On Saturday, October 23, thirty volunteers from Oceanside Conservation Trust of Casco Bay, Falmouth Land Trust, and Chebeague & Cumberland Land Trust gathered for training in land stewardship. The focus of the instruction was annual monitoring visits and reports. **Annual monitoring of conservation easements is required by the State of Maine and by the National Land Trust Accreditation Commission.** This practice ensures that the land trust is following through on its promise to care for and manage the protected properties. OCT chronicles its monitoring visits in the spring newsletter each year.

The information at the training was presented by Sophia DeMaio, the Portland North Stewardship Assistant, and by Tricia Rouleau, Project Manager of FB Environmental, a consulting firm in Portland. The session began at the Falmouth Library with a review of information and goals of the training. The group then traveled to the Falmouth Corners Preserve, a property protected by the Falmouth Land Trust. There Tricia and Sophie led separate groups on a walk that modeled a monitoring visit, capturing photos, GPS readings and notes on new or significantly changed natural

and human-made features. The annual monitoring reports provide a record of any changes that have occurred to the property; the changes that are part of the natural system are not the focus – it is the changes that are detrimental or in conflict to the easement that are of interest. After the walk, the group returned to the Library for a discussion and warm pizza lunch donated by Ricetta's Pizzeria.

This training was the culmination of a year long project focused on Stewardship Program Development for the three land trusts. Along with the Invasive Species events over the summer that were open to the public and held on Cliff, Long and Chebeague Islands, this training was funded by the Maine Community Foundation's Fund for Land Conservation and the Edward H. Davis Benevolent Fund. In total, close to 200 people attended the events.



Survey Marker

College Island from Fowler's Beach



College Island from the "Cushion Air"



Difficult Access



Watersweet Invasion



OCEANSIDE CONSERVATION TRUST OF CASCO BAY

BOARD OF DIRECTORS 2010-2011

Roger Berle, President.....	781-5331 766-2827 <i>Cliff Island</i>
Brenda Buchanan, Vice President....	854-5824
Jane Laughlin, Secretary.....	799-9285 766-2570 <i>Great Diamond Island</i>
Stephanie Weaver, Treasurer.....	761-4212 <i>Cushing Island</i>
A.J. Alves.....	766-2423 <i>Peaks Island</i>
Mike Beaudoin.....	774-0522 766-3028 <i>Cliff Island</i>
Bob Bittenbender.....	892-3818
Erno Bonebakker.....	871-0048 615-6664 <i>Chebeague Island</i>
Priscilla Doucette.....	772-5705 <i>Little Diamond Island</i>
Jeanne Gulnick.....	766-2601 <i>Peaks Island</i>
Eric Handley	899-0027
Michael Johnson.....	232-5778 <i>Long Island</i>
Christine McDuffie.....	829-3231 766-5277 <i>Long Island</i>
Harry R. Pringle.....	774-0437 766-3326 <i>Little Diamond Island</i>

ADVISORY BOARD:

Tom Bergh.....	766-2419 <i>Peaks Island</i>
Mark Greene.....	766-4440 <i>Long Island</i>
Eliza Cope Nolan.....	772-5024 <i>Cushing Island</i>
John Whitman.....	766-2211 <i>Peaks Island</i>

Oceanside Conservation Trust of Casco Bay

PROPERTY	LOCATION	OWNER	DATE ACQUIRED	APPROXIMATE SIZE
Fowler's Beach	Town of Long Island	Long Island Civic Association	5/25/1987	6.38 acres
The Bluffs	Cliff Island, Portland	Robert & Josephine Belknap, Tenants in Common	12/26/1989	18 acres
Davis Sanctuary	Peaks Island, Portland	OCT	5/14/1994	6.8 acres
College Island	Town of Long Island	OCT	9/7/1994	1 acre
Battery Steele	Peaks Island, Portland	Peaks Island Land Preserve	7/28/1995	14.3 acres
North Point	Cliff Island, Portland	Helen W. Kenefick	12/1997	9 acres
ACE Ballfield	Cliff Island, Portland	Cliff Island Corporation for Athletics & Conservation Education	1/31/2000	15.4 acres
Griffin's Cove	Cliff Island, Portland	Cliff Island Corporation for Athletics & Conservation Education	12/22/2000	.75 acres
Everett & Mildred D. Skillings Woods	Peaks Island, Portland	OCT	2001	2 acres
Wreck Cove	Town of Long Island	Town of Long Island	7/29/2004	11.3 acres
Echo Pond	Peaks Island, Portland	OCT	04/2005	.4 acres
Memorial Woods	Little Diamond Island	Little Diamond Island Association	09/2006	.5 acres

In addition, OCT has a cooperative role in the protection of Cow Island, Stockman's Island, and Rose's Point, Chebeague Island.

MISSION STATEMENT

The mission of OCT is to facilitate the conservation of wild or undeveloped open space, scenic areas, and historic landmarks in the Casco Bay region and to foster low-impact and respectful access to these resources, as well as to enhance the cultural, economic, and civic well-being of residents and visitors. The Trust may acquire, hold, and transfer interests in land, including easements, in order to accomplish this mission and to assure that a diversity of ecosystems will be available to future generations. In addition, the Trust may hold charitable, cultural, and educational activities for the benefit of residents and visitors.

(Adopted 10/24/96)

VISION STATEMENT

While maintaining the highest standards of stewardship and land management, OCT will become a leader in coordinating and facilitating land conservation efforts among individuals, island organizations, and land trusts in Casco Bay.

Oceanside Conservation Trust of Casco Bay

P.O. BOX 10404 | PORTLAND, MAINE 04104

OceansideConservationTrust@gmail.com | Tel. 207-699-2989

In order to support the work of Oceanside Trust, I/we are sending this contribution.

Membership Dues: \$20.00

Additional Gift: _____

Name(s): _____

Mailing Address: _____

Email: _____

Membership is renewable at any time before the OCT annual meeting. Please check the four-digit number directly following your name on the address label; the number indicates the year your most recent membership dues were received if applicable. Your contributions are tax deductible.

Thank You!



**OCEANSIDE CONSERVATION TRUST
OF CASCO BAY**

**P.O. BOX 10404
PORTLAND, MAINE 04104**

PRSR
U.S. Postage
PAID
Portland, ME
Permit No. 658

*Since 1982, approximately 85 acres
on Casco Bay Islands have been
permanently protected.*

*Oceanside Conservation Trust
of Casco Bay welcomes
your support.*