

PREVIEW OF OCT'S *Summer Events*

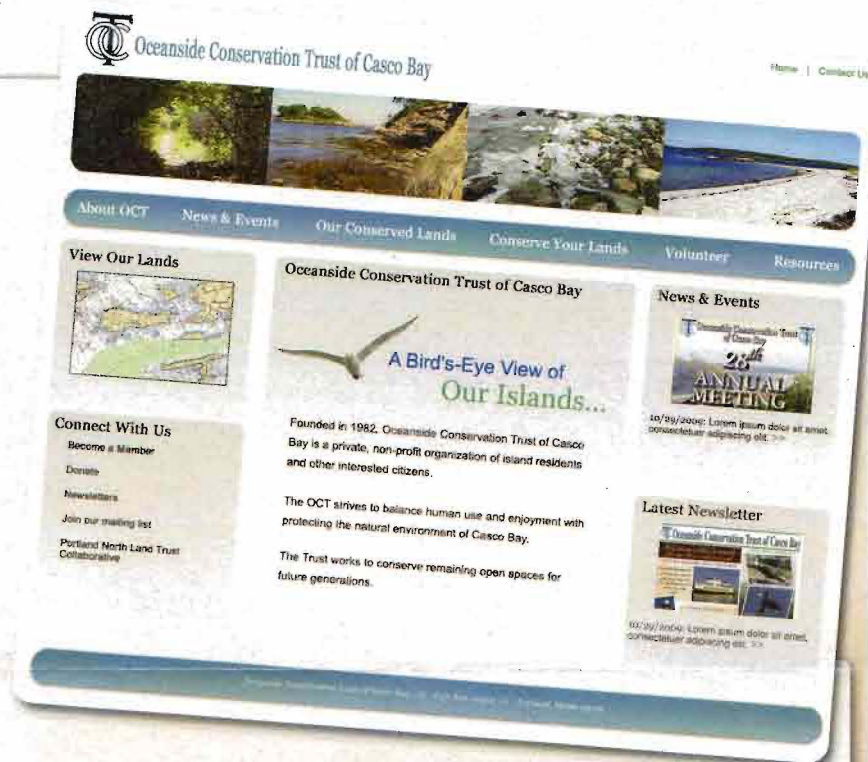
NEW WEBSITE LAUNCH

Oceanside Conservation Trust of Casco Bay *will soon* launch its new website at www.oceansideconservationtrust.org

Designed by OCT board member Eric Handley, the new website will be a valuable resource for Oceanside's membership and for the public. Information about our policies, events, conservation practices, and monitoring activities will be available for quick and easy reference.

Included in the new design are the current newsletter and a complete archive of our past newsletters. Other features are current events, updates of our conservation programs and invasive plant management programs, biographies of our board members, and a photo archive of OCT's properties and yearly monitoring activities.

Visitors to www.oceansideconservationtrust.org will find easy to use forms for membership applications and donations. The new design has links to island and mainland websites and news of our volunteer opportunities.



Please look for www.oceansideconservationtrust.org in the summer of 2011. We encourage our members to contribute stories, photos, and news.

SAVE THE DATE

29th Annual MEETING

Little Chebeague Island

JULY 13

2:30 - 5:00

Transportation from Portland and other islands may be arranged by calling 699-2989.

Guest speaker: Doug Welch, Executive Director of Maine Island Trails Association, "**Stewardship Through Partnership: Conservation, Recreation, and Education on Little Chebeague Island.**"

Doug Welch joined MITA as its Executive Director in 2007. Previously he was a Vice President with Youth Alternatives in Portland. Before that he spent five years with the Island Alliance – a nonprofit organization charged with developing programs and revenues for the new Boston Harbor Islands National Park. Doug also has eight years of experience assisting nonprofit economic and community development programs. He has a Masters in Public Policy from the Kennedy School of Government at Harvard University and a BA from Wesleyan University in Connecticut. He lives in Portland with his wife Caitlin and 11-year-old daughter Genevieve.

PLEASE JOIN US!

DIAMOND'S EDGE RESTAURANT
Great Diamond Island

July 24th | 1:30-4:30

Sunday Shindig On the Bay

Celebrating 25 Years
of Land Conservation in the
Casco Bay Region

Live Music, Delicious Food & Drinks, Family Friendly Activities

TICKETS: \$40 per person
(12 and under free)

PURCHASE TICKETS ONLINE AT:
[www.brownpapertickets.com/
events/181685](http://www.brownpapertickets.com/events/181685)

For More Information

Portland North Land Trust Collaborative
207-699-2989

portlandnorth@gmail.com
www.landtrustcollaborative.org

Hosted By:

Falmouth Land Trust

Chebeague & Cumberland Land Trust

Oceanside Conservation Trust of Casco Bay

OCT CONTINUES *to* SPREAD *the* WORD *on* INVASIVES

Back by popular demand, Bob Bittenbender will present a continuation and follow up to last summer's workshops.

"Invasive Species Removal and Native Plants Revegetation"

CLIFF ISLAND - co-hosted by ACE - August 4, 4:00,
Cliff Island Association Hall

LONG ISLAND - co-hosted by the Long Island
Community Garden on Island Avenue - August 18,
5-7:00

*(Exact times and locations will be announced on the islands
or may be obtained by contacting any board member.)*



OCT ADOPTS *an* INVASIVE PLANT POLICY



OCT has passed an invasive plant policy. This document will be a reference for all future work with invasives on OCT property. OCT will help implement this policy on all property which it owns or on which it holds conservation easements.

OCT will use best practices to manage invasive plants.

The goal of active monitoring and proactive management is to minimize the impact of invasive plants on OCT's properties.

OCT will also seek to educate abutters and the communities where its properties are located about invasive plants and the importance of identifying and managing invasive plants.

As part of its annual monitoring program, OCT will check its properties and their surroundings for invasive plants, paying special attention to newly encountered species, increased abundance or extent of existing stands, and impacts of management activities. Areas of concern will be mapped to track changes over time.

The focus of control efforts will generally be on areas of highest biodiversity. Other goals besides preserving biodiversity are to educate the public, and enhance the scenic, historic and recreational qualities of a property.



Although it is the simplest approach as it does not require permitting or a pesticide applicator license, mechanical control is not always feasible with large infestations. In addition, it can disrupt soils and demand considerable labor. Workers should begin at the outside of a property and move in from where the density of invasives is lowest to where it is highest in order to slow the spread. Approaches such as pulling and digging are best employed in the spring when the soil is moist and seeds have not yet formed. Cutting or mowing can prevent plants from photosynthesizing, but may need to be continued for 3 to 5 years before results are visible. Plant removal in the shoreland zone may require permitting and must be done according to state rules or local ordinances.

Herbicides are sometimes used to control invasive plants, especially when the infestation is extensive. Most commonly used are Glyphosate (found in Roundup or Rodeo for wetland areas) and Tric10pyr (found in Brush-Be-Gone, Garlon or Renovate). Use of herbicides can be limited by using the cut-stem approach. The stem of a plant is cut and herbicide applied to the cambium layer of the freshly cut surface. The common herbicides used to control invasive plants are regulated as pesticides. A commercial pesticide applicator license is required to legally apply an herbicide when the application will take place in an area open to the public. OCT will contact the Maine Board of Pesticides Control at pesticides@maine.gov tel: 207 287-2731 when using these methods

Source: the above document was largely adapted from: <http://www.waynemaine.org/conservation%20survey%20of%20invasive%20plants%20on%20town%20land.pdf>

OCT'S INVASIVE PLANT POLICY AT WORK

While working on the Invasive Plant Policy, Erno Bonebaker and Eric Handley also developed a specific management plan for College Island. During monitoring visits in 2008, 2009, and 2010, OCT and Maine Island Trails Association monitors noted that Asiatic bittersweet and rugosa rose are increasingly crowding native bayberry and poison ivy over the vegetated crown of the island. Bittersweet and rugosa are both considered exotic and invasive in this habitat.

MANAGEMENT PLAN

After informing and conferring with nearby residents and the Town of Long Island, OCT volunteers will selectively cut back bittersweet and rugosa, especially where it is directly crowding stands of bayberry and poison ivy. The cutting will be done early in the spring, with the goal of releasing the desirable species from encroaching invasives, thereby allowing the desirable plants to expand and thrive.

The selective cutting may need to be repeated during the growing season and over several growing seasons before a definitive assessment of its efficacy can be made. Selective cutting is intended to minimize the visual impact of the management efforts to preserve the vegetated appearance of the island.

To evaluate the effectiveness of these management activities, OCT will create photographic and narrative records of the status of vegetation and management actions. Some limited opening of the dense shrub canopy may incidentally allow development of a more extensive groundcover that is currently shaded out, thereby protecting the limited soil resources of the island.

Native Plants Appropriate for Revegetation

1. blackhaw viburnum
2. apple
3. red maple
4. white spruce
5. Indian magic crabapple
6. blackhaw viburnum
7. red twig dogwood

OCT'S SPRING MONITORING ...

DEFINITION OF CONSERVATION EASEMENT MONITORING

Conservation easement monitoring is defined by the Land Trust Accreditation Commission as annual documented visual inspection of a conservation easement-protected property to ensure that the terms of the easement are being upheld, with on-the-ground physical inspections as the site warrants.

INDICATOR PRACTICE 11C. EASEMENT MONITORING

The land trust monitors its easement properties regularly, at least annually, in a manner appropriate to the size and restrictions of each property, and keeps documentation (*such as reports, updated photographs and maps*) of each monitoring activity.

For more information on implementing these practices, visit the Land Trust Alliance's complete online resource, The Learning Center, <http://learningcenter.lta.org> or www.landtrustaccreditation.org.

MONITORING VISIT CHECKLIST:

- ☐ property field file
- ☐ monitoring report sheet
- ☐ clipboard
- ☐ notepad & pens
- ☐ copy of topographic map and/or aerial map with conservation parcels drawn
- ☐ compass
- ☐ GPS unit (with back-up batteries)
- ☐ flagging tape (to highlight boundaries corner points)
- ☐ boundary & trail markers
- ☐ camera (check batteries)
- ☐ measuring tape
- ☐ cell phone
- ☐ water & lunch
- ☐ rain/cold weather gear
- ☐ insect & tick repellent
- ☐ trash bags (for removing cans & backpack)
- ☐ hat & sunglasses
- ☐ boots

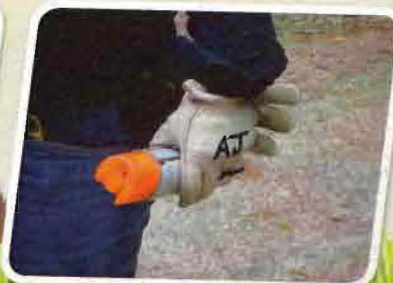
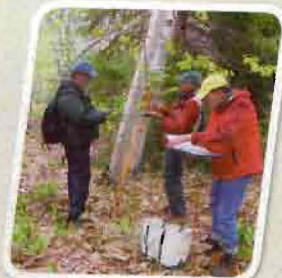
ACCREDITATION PROGRESS

Oceanside has officially registered for the National Land Trust Alliance's Accreditation Process. We are in the game, and progress is being made toward accreditation, but there is much work still to be done. We have discussed, drafted, re-written, and finally approved all the policies required by LTA for the accreditation process. They are in place. Now Oceanside's board members have stepped up to write the summaries describing how OCT carries out those policies through our practices on the ground and in board meetings - and we will be tweaking those practices as we do our work to be sure we are carrying out our stated intentions. By June the summaries will be complete, and our timeline has us pulling it all together with stacks of support documentation and attachments for the pre-application submission on August 1. Then the final application will be prepared, formatted, edited,

and reviewed. The Land Trust Alliance will choose a sampling of project files which we will have to prepare to submit with the application. In early fall the final application binders will be prepared, and the whole shebang will be trundled to the post office by November 10. Whew! No time to relax, however, because we will be waiting for the conference call, a kind of final oral exam which gives us a chance to answer LTA's questions and fill in any blanks discovered as they reviewed our submission. If all goes as well as planned, we will achieve our accreditation by the spring of 2012.

As part of the process, the LTA Accreditation Commission does like to hear from the public regarding the operations of the land trust. If you have comments on OCT's operations as a land trust, please feel free to send them along to the Commission. Please refer to the Public Notice for Accreditation on page 5 of this newsletter for information on how to comment.

the Guidelines at Work!



PUBLIC NOTIFICATION FOR ACCREDITATION:

The Land Trust Accreditation Program recognizes land conservation organizations that meet national quality standards for protecting important natural places and working lands forever. OCT is pleased to announce it is applying for accreditation. We have registered in the second round for 2011 along with several other land trusts from Maine. A public comment period is now open.

The Land Trust Accreditation Commission, an independent program of the Land Trust Alliance, conducts an extensive review of each applicant's policies and programs. Accreditation demonstrates the sustainability of our organization, ensuring that OCT will continue in perpetuity to protect our lands.

The commission invites public input and accepts signed, written comments on pending applications. Comments must relate to how OCT complies with national quality standards. These standards address the ethical and technical operation of our land trust. For the full list of standards see www.landtrustaccreditation.org/getting-accredited/indicator-practices.

To learn more about the accreditation program and to submit a comment, visit www.landtrustaccreditation.org. Comments may also be faxed or mailed to the Land Trust Accreditation Commission, Attn: Public Comments: (fax) 518-587-3183; (mail) 112 Spring Street, Suite 204, Saratoga Springs, NY 12866. Comments on OCT's application will be most useful if received by September 30, 2011.

SUCCESSFUL WINTER BIRDING TRIP

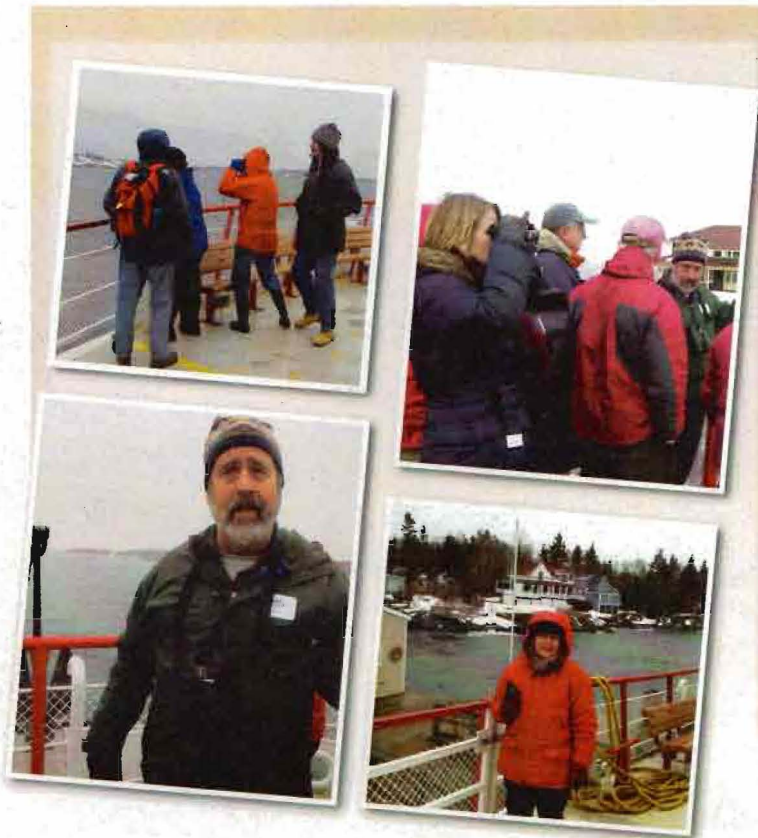
On March 5, 2011, a hardy group of thirty-three adventurers took the Casco Bay Lines 10 a.m. mail boat run. OCT board member Bob Bittenbender and his wife Margi Huber led Oceanside Conservation Trust of Casco Bay's first-ever birding event. Some birds like Common Eiders and Common Loons are in Casco Bay year round while others such as Surf Scoters, Horned Grebes, Red Throated Loons, and Buffleheads are here only during the winter. The group observed seventeen species. The weather was cloudy with a few rain sprinkles and quite mild for the time of year. At Cliff Island, the half-way point, they enjoyed some snacks and hot soup to ward off the cold.

Bob and Margi also pointed out a number of OCT and other land trust properties and discussed OCT's work and mission.

OCT board member Christine McDuffie and her grandson were among the participants. Before the trip she told Bob that she wanted to see a Red Throated Loon that sometimes winters in this area. Sure enough, Bob located one.

The success of this event ensures that OCT will continue to offer more birding trips in Casco Bay.

Remember, summer also is a great time to spend looking for birds at any of OCT's properties.



LITTLE CHEBEAGUE

Thanks to an infrastructure grant from the Maine Humanities Council with matching funds from the Casco Bay Island Development Association and private contributions, MITA will create and install interpretive signage on Little Chebeague Island this summer and develop website content to enable further exploration of the island's human and natural history at home and in the classroom.

Another grant from the Maine Historical Society will enable MITA to preserve the archives of long-time island caretaker Richard Innes who has meticulously documented Little Chebeague's history. The new signage and web material will build on Innes' work to encourage thoughtful reflection on the adaptive reuse of this cherished island.

The MHS grant will also support an intern, Peaks Island summer resident Eleanor Eckel, who will assist in processing the archives and selecting material for an online exhibit. *(continued on pg. 7)*

MANY MEMBERS AND FRIENDS OF OCT ARE PARTICIPATING IN THIS PROJECT:

- OCT board member Jane Laughlin will assist with the archive and on line exhibit project.
- OCT board member Eric Handley again will volunteer on the island on Wednesdays, the regular island work day for those interested in joining in the island field work.
- OCT board member Michael Johnson, an ecologist and Long Island resident, has weighed in with his knowledgeable counsel on island management and permitting issues.
- OCT board member Chris McDuffie acts as liaison with the Long Island community, including updates in the Long Island newsletter.
- OCT board member Erno Bonebakker will continue to coordinate the LCI project and has established a Picture Post on the field overlooking Chandlers Cove and Cliff Island which can be accessed at <http://picturepost.unh.edu/post.jsp?postId=145>



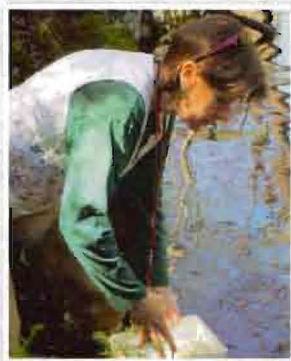
Erno Bonebakker and his wife Victoria enjoyed the pleasures of snowshoeing the island in January.



Eric Handley volunteers.

MLTN CONFERENCE

Dr. Aram Calhoun of the UMO Wildlife Ecology Dept. gave a Vernal Pool workshop prior to the Maine Land Conservation Conference this year. The Friday workshops are a wonderful opportunity to hear authorities talk about their specialties while enjoying some of the area's preserved lands, in this case the Cathance River Preserve.



Another Friday offering was about building trails to serve the needs of those who use them. I attended three of the regular sessions on Saturday - Nonprofit Financial Management, Successful Legislative Outreach, and Case Law Updates - each with crackerjack presenters. Even lunch was served with 45 minute "Lunch and Learn" presentations. The one I heard was "Demystifying Stewardship Funding."

Those indoor sessions sound like a dry way to spend a beautiful spring day, but just being with good people who do good work protecting important places in Maine is invigorating, and I always get practical information to bring back for my work with Oceanside. I look forward to Maine Coast Heritage Trust's well planned, well executed conference every spring. - *Chris McDuffie*

In addition to developing interpretive material for the island, plans include battling invasive bittersweet and other invasive plants as well as maintaining and extending the trails and fields on the island.

OCT is planning its Annual Meeting on LCI (*see page 1*). Other events and tours of the island are planned during the summer, including a tour by a group from Long Island.

In addition to the Maine Island Trail Association, support and encouragement has been offered by Portland Trails, Portland Yacht Club, Kittery Trading Post, Rippleffect, and others.

For more information, to volunteer, or to visit Little Chebeague, please contact project coordinator Erno Bonebakker at ebonebak@gmail.com.

OCEANSIDE CONSERVATION TRUST OF CASCO BAY

BOARD OF DIRECTORS 2010-2011

Roger Berle, President.....	781-5331 766-2827 <i>Cliff Island</i>
Brenda Buchanan, Vice President....	854-5824
Jane Laughlin, Secretary.....	799-9285 766-2570 <i>Great Diamond Island</i>
Stephanie Weaver, Treasurer.....	761-4212 <i>Cushing Island</i>
A.J. Alves.....	766-2423 <i>Peaks Island</i>
Mike Beaudoin.....	774-0522 766-3028 <i>Cliff Island</i>
Bob Bittenbender.....	892-3818
Erno Bonebakker.....	871-0048 615-6664 <i>Chebeague Island</i>
Priscilla Doucette.....	772-5705 <i>Little Diamond Island</i>
Jeanne Gulnick.....	766-2601 <i>Peaks Island</i>
Eric Handley.....	899-0027
Michael Johnson.....	232-5778 <i>Long Island</i>
Christine McDuffie.....	829-3231 766-5277 <i>Long Island</i>
Harry R. Pringle.....	774-0437 766-3326 <i>Little Diamond Island</i>

ADVISORY BOARD:

Tom Bergh.....	766-2419 <i>Peaks Island</i>
Mark Greene.....	766-4440 <i>Long Island</i>
Eliza Cope Nolan.....	772-5024 <i>Cushing Island</i>
John Whitman.....	766-2211 <i>Peaks Island</i>

Oceanside Conservation Trust of Casco Bay

PROPERTY	LOCATION	OWNER	DATE ACQUIRED	APPROXIMATE SIZE
Fowler's Beach	Town of Long Island	Long Island Civic Association	5/25/1987	6.38 acres
The Bluffs	Cliff Island, Portland	Robert & Josephine Belknap, Tenants in Common	12/26/1989	18 acres
Dave's Sanctuary	Peaks Island, Portland	OCT	5/14/1994	6.8 acres
College Island	Town of Long Island	OCT	9/7/1994	1 acre
Battery Steele	Peaks Island, Portland	Peaks Island Land Preserve	7/28/1995	14.3 acres
North Point	Cliff Island, Portland	Helen W. Kenefick	12/1997	9 acres
ACE Ballfield	Cliff Island, Portland	Cliff Island Corporation for Athletics & Conservation Education	1/31/2000	15.4 acres
Griffin's Cove	Cliff Island, Portland	Cliff Island Corporation for Athletics & Conservation Education	12/22/2000	.75 acres
Everett & Mildred D. Skillings Woods	Peaks Island, Portland	OCT	2001	2 acres
Wreck Cove	Town of Long Island	Town of Long Island	7/29/2004	11.3 acres
Echo Pond	Peaks Island, Portland	OCT	04/2005	.4 acres
Memorial Woods	Little Diamond Island	Little Diamond Island Association	09/2006	.5 acres

In addition, OCT has a cooperative role in the protection of Cow Island, Stockman's Island, and Rose's Point, Chebeague Island.

MISSION STATEMENT

The mission of OCT is to facilitate the conservation of wild or undeveloped open space, scenic areas, and historic landmarks in the Casco Bay region and to foster low-impact and respectful access to these resources, as well as to enhance the cultural, economic, and civic well-being of residents and visitors. The Trust may acquire, hold, and transfer interests in land, including easements, in order to accomplish this mission and to assure that a diversity of ecosystems will be available to future generations. In addition, the Trust may hold charitable, cultural, and educational activities for the benefit of residents and visitors.

(Adopted 10/24/96)

VISION STATEMENT

While maintaining the highest standards of stewardship and land management, OCT will become a leader in coordinating and facilitating land conservation efforts among individuals, island organizations, and land trusts in Casco Bay.

Oceanside Conservation Trust of Casco Bay

P.O. BOX 10404 | PORTLAND, MAINE 04104
OceansideConservationTrust@gmail.com | Tel. 207-699-2989

In order to support the work of Oceanside Trust, I/we are sending this contribution.

Membership Dues: \$20.00

Additional Gift: _____

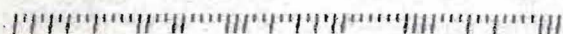
Name(s): _____

Mailing Address: _____

Email: _____

Membership is renewable at any time before the OCT annual meeting. Please check the four-digit number directly following your name on the address label; the number indicates the year your most recent membership dues were received if applicable. Your contributions are tax deductible.

Thank You!



04101+5406

Printed on recycled paper



ERIC AND ELIZABETH HANDLEY
56 WILSON ST UNIT 4
PORTLAND ME 04101-5406

*Since 1982, approximately 85 acres
on Casco Bay Islands have been
permanently protected.
Oceanside Conservation Trust
of Casco Bay welcomes
your support.*

OCEANSIDE CONSERVATION TRUST
OF CASCO BAY
P.O. BOX 10404
PORTLAND, MAINE 04104



50c MAINE PMDC 049
17 JUN 2011 PM 3:7

